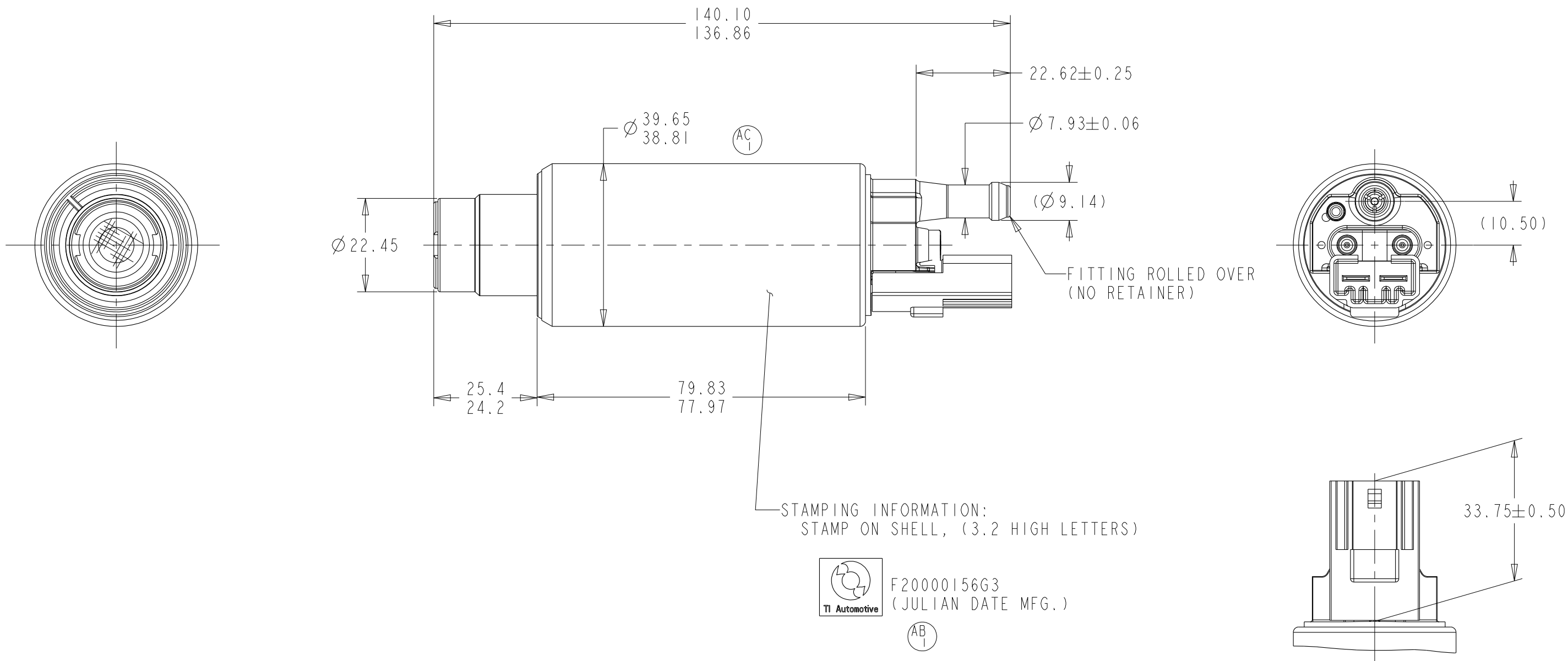


REVISIONS						
ZONE	LTR	DESCRIPTION	CHANGE No	DATE	BY	APPR'D
	AA	INITIAL RELEASE	DR83800	08FEB21	SLK	TLH
5-C 6-B 8-B	AB	AB1 UPDATED STAMPING INFO AB2 REMOVED NOTES 3 THRU 5 AB3 UPDATED PERFORMANCE CHART	82529	03JUN21	SLK	TLH
5-D	AC	AC1 DBTC0031 MAGNETS WERE 184-31	C3'3985	04APR23	JTK	MLM



### PERFORMANCE CHART

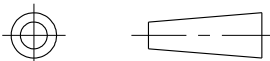

TEST FLUID: MS 142-66

VOLTAGE	PRESSURE (kPa)	MIN. FLOW (LPH)	MAX. CURRENT DRAW (AMPS)
14.4	430	170	9.7
SHUT OFF PRESSURE AT 13.5V: 1200 kPa MAX, 650 kPa MIN			

NOTES:

- ELECTRICAL TERMINALS SHOULD BE CONNECTED TO 250 FASTON TERMINAL (FEMALE)  
INSULATOR PORTION CAN BE CONNECTED TO:  
SUMITOMO ELECTRIC INDUSTRIES PART NO. 6098-0731, 6914-0019 OR  
AMP CONNECTOR PART NO. C-346027-1
- PUMP TO BE PACKAGED TO PREVENT CONTAMINATION WITH FOREIGN MATERIAL

KEY PRODUCT CHARACTERISTICS				
REFER TO TI AUTOMOTIVE GLOBAL ADVANCED QUALITY PLANNING DOCUMENT CW-4-ALL-411 FOR THE CLASSIFICATION AND CONTROL OF KEY PRODUCT CHARACTERISTICS				
TYPE OF CHARACTERISTIC	SAFETY	REGULATORY	FUNCTION	FUNCTION PROCESS
	SC	SC	SC	SC
NUMBER PER EACH CHARACTERISTIC	--	--	--	--
TOTAL NUMBER OF CHARACTERISTICS	--	--	--	--
- TI AUTOMOTIVE CONFIDENTIAL AND PROPRIETARY - THIS DRAWING IS PROPERTY OF TI AUTOMOTIVE. TI AUTOMOTIVE CLAIMS PROPRIETARY RIGHTS IN THE SUBJECT MATTER SHOWN AND DESCRIBED ON THIS DRAWING AND RETAINS ALL INTELLECTUAL PROPERTY RIGHTS. THE DRAWING IS PROVIDED FOR REFERENCE PURPOSES ONLY AND ON THE EXPRESS CONDITION THAT IT WILL BE HELD IN CONFIDENCE. THIS DRAWING SHALL NOT BE DISCLOSED TO OTHERS OR USED FOR THE PURPOSE OF MANUFACTURE BY OR PROCUREMENT FROM OTHERS OF THE ARTICLE OR PART SHOWN WITHOUT TI AUTOMOTIVE'S EXPRESS WRITTEN CONSENT. NO LICENSE OR OTHER RIGHT IS GIVEN OR IMPLIED BY THE PROVISION OF THIS DRAWING TO RECIPIENT. COPYRIGHT, TI AUTOMOTIVE 2018, ALL RIGHTS RESERVED.				

METRIC			
ALL DIMENSIONS ARE IN MILLIMETERS			
DO NOT SCALE			
DECIMAL TOLERANCES UNLESS OTHERWISE SPECIFIED ONE PLACE ±0.25 TWO PLACE ±0.13 ANGLES ±1°			
		THIRD ANGLE PROJECTION	
DIMENSIONS IN ACCORDANCE WITH ASME Y14.5 - 2009			
		630 COLUMBIA ST. CARO, MI 48723 +1 989.673.7727	
TI Automotive			
ENGINEER:	T.HOBSON	08FEB2021	MATERIAL/SPECIFICATION:
DESIGNER:	S.KADY	08FEB2021	
CAD SYSTEM: PRO/E	SCALE: 1:1	SHEET NO. 1 OF 1	
REFERENCE ID/REV.: HJPT0037		2D PLM REFERENCE/REV.: AR0061010/AC	
REFERENCE ID/REV.: 000130693/AB		3D PLM REFERENCE/REV.: AR0061009/AB	
DRAWING NAME: FUEL PUMP OUTLINE			
SIZE: A2	DRAWING NUMBER: F20000156G3		